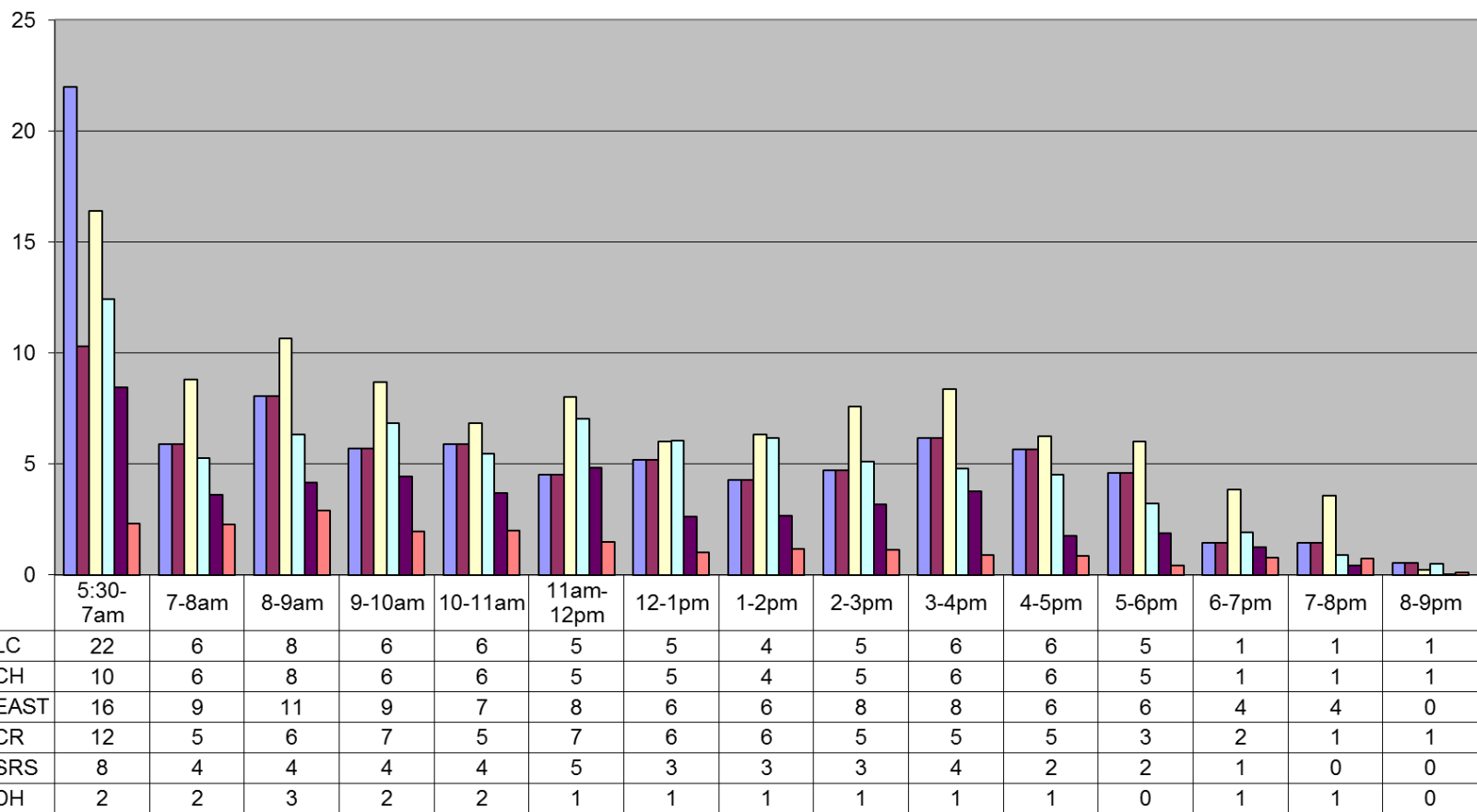


### July 2014 Fitness Room Use By Hour



Average - All Fitness by: Hr	69	31	40	35	32	35	27	27	28	33	27	21	13	11	2
<b>Visits</b>	<b>LC</b>	<b>CH</b>	<b>EAST</b>	<b>CR</b>	<b>SRS</b>	<b>DH</b>	<b>Total (All CTRS)</b>								
Tot Month	3607	2227	3223	2291	1399	599	13346								
v Per Day	120.2	74.2	107.4	76.4	46.6	20.0	444.9								
Av Hr	7.5	4.6	6.7	4.8	2.9	1.2	27.8								