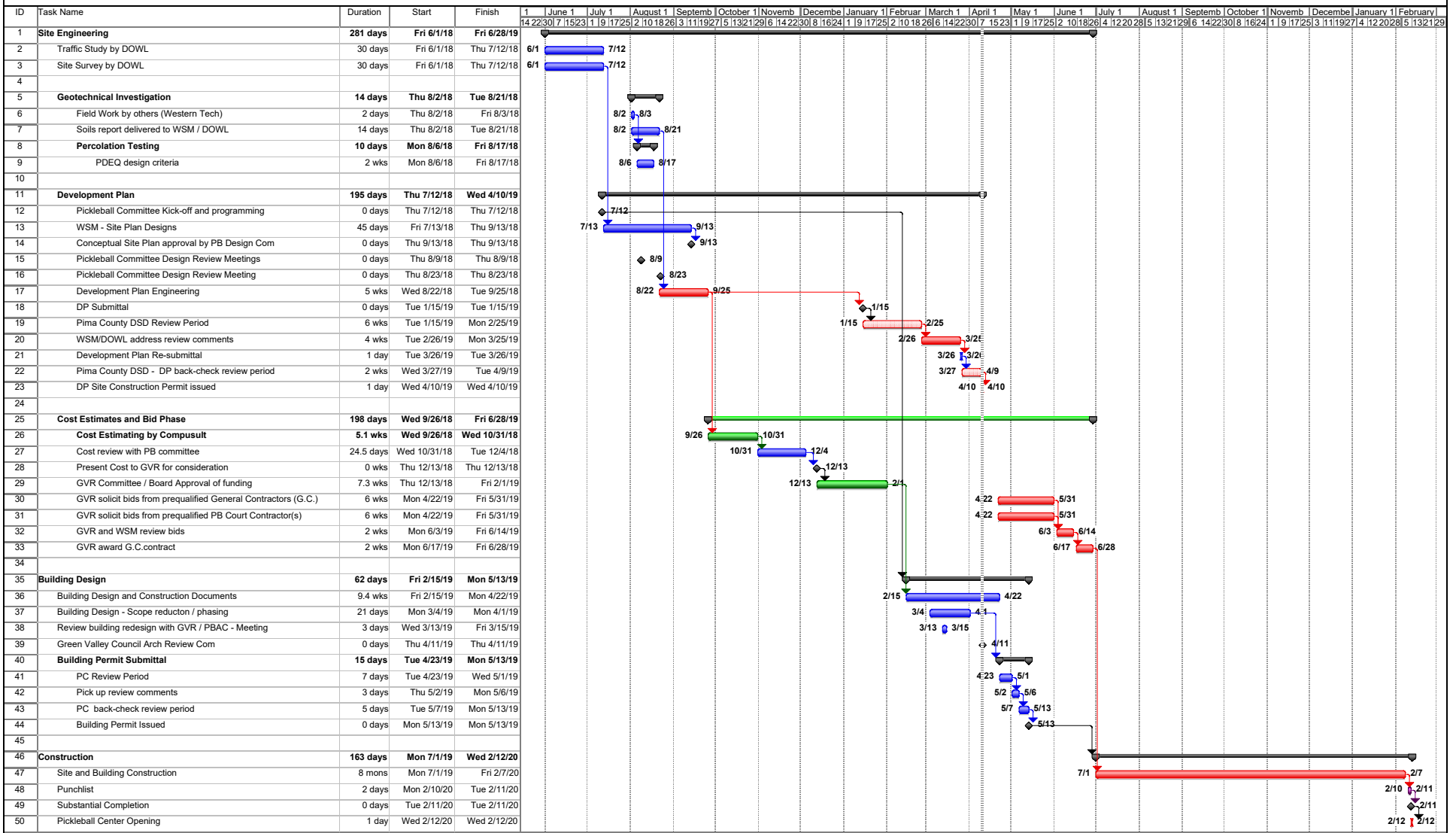


GVR 24-Court Pickleball Center  
WSM Architects, Inc. 03-11-19 update



Project: 18-018 Pickleball Canoa Sche  
Date: Wed 4/10/19

Task		Milestone		Rolled Up Critical Task		Split		Group By Summary	
Critical Task		Summary		Rolled Up Milestone		External Tasks		Deadline	
Progress		Rolled Up Task		Rolled Up Progress		Project Summary			